



the rules of the game

Please make sure you read this so you can avoid having your designs rejected

1 NO company names, personal names, signatures, e-mail addresses or urls are allowed on your design - don't worry : your name will feature on the back of your tshirt if you are one of the winners.

2 Only ORIGINAL works are accepted. No copywritten material may be used either. If you steal someone else's design your design will be rejected and the offended artist will be notified.

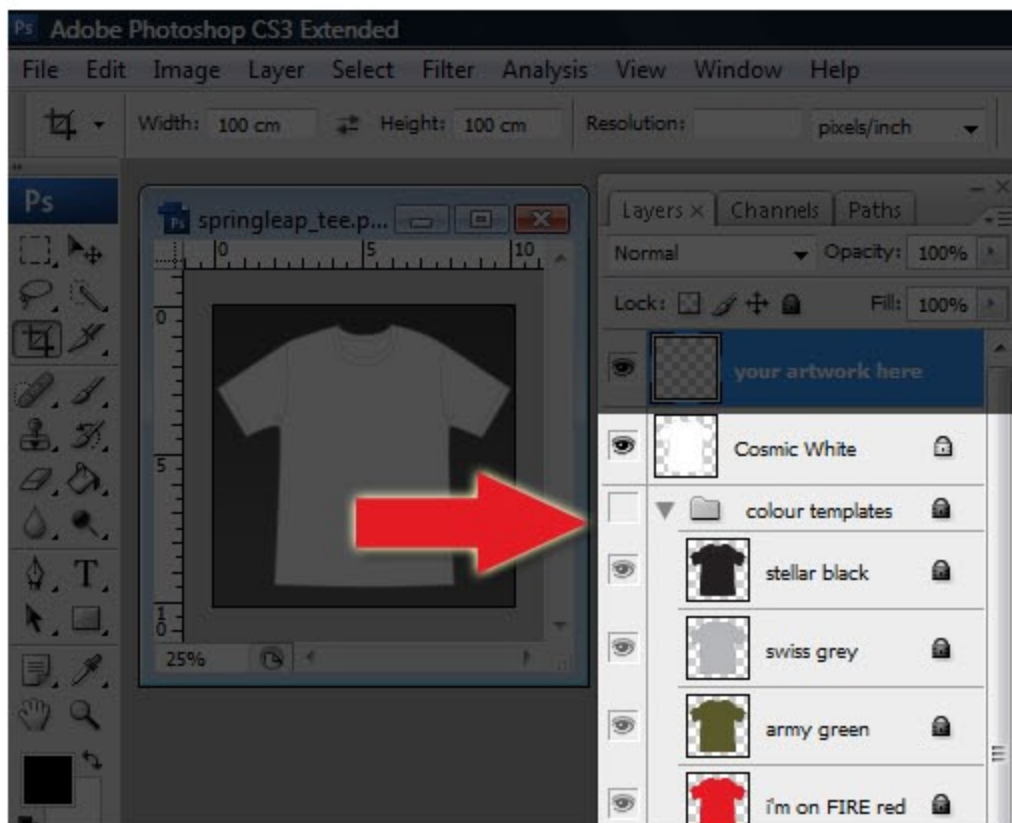
You can also not submit paintings unless they have been vectorised or photos. Representations of well known persons will also be rejected due to copyright infringement.

3 You can only design on the FRONT of the tshirt. Your design cannot touch the hems, collar or sleeves. designs can be up to 38x50cm - this is the standard screenprinting size.



4 Inappropriate creations will be rejected. The idea behind springleap is that of empowerment and upliftment. We have really open minds - but outright profanity or absolutely tasteless offensive images are not cool.

5 You must first select one of the formats from the springleap submission kit as well as a tshirt colour only from the 12 possible colour options provided therein. This will become your design's background colour.

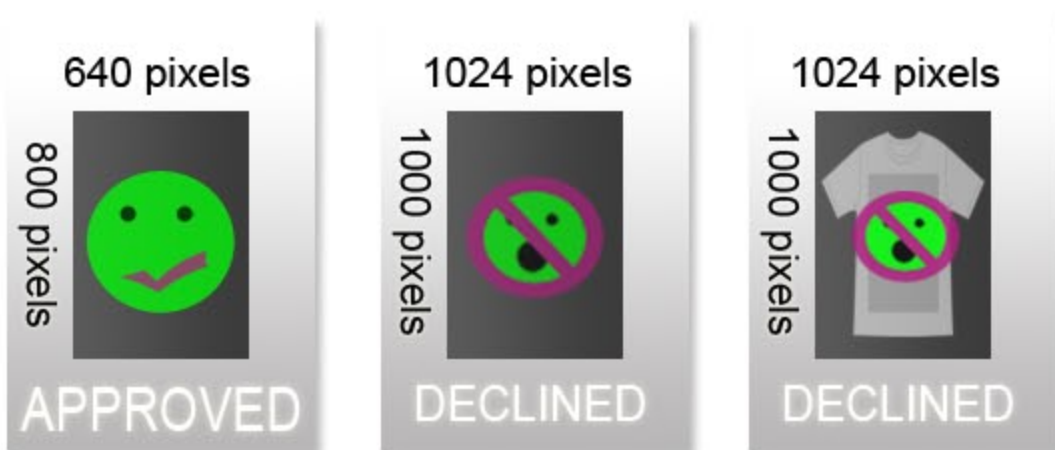


6 You will need to submit a thumbnail 124 pixels wide X 88 pixels high. Please keep the file size under 100k. It can be submitted as a GIF, JPG or PNG formats. Save images at 150DPI

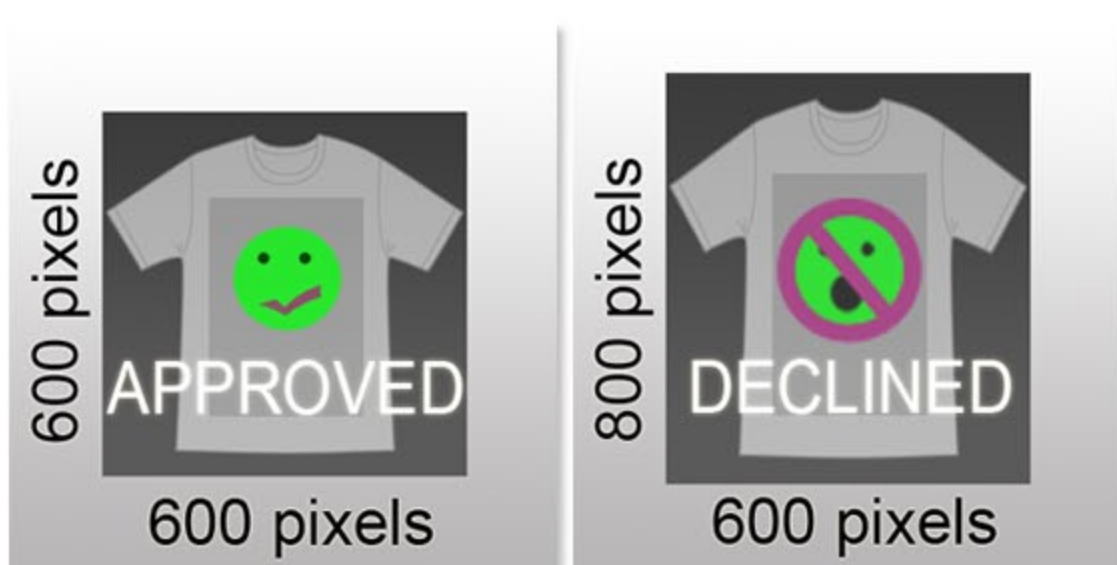


7 You will need to submit a large preview image 640 pixels wide X 800 pixels high. Please keep the file size under 260k. It can be submitted as a GIF, JPG or PNG formats. Save images at 150DPI.

Please make sure that your background colour for you large preview image is the same colour as your t-shirt colour you choose.



8 You will also need to submit a tshirt preview image that is 600 pixels wide by 600 pixels high. Please keep the file size under 260k. It can be submitted as a GIF, JPG or PNG formats. Please do not change the gradient background provided and keep only to the tshirt colours provided. All you need to do is convert the file to one of the formats allowed. Do not resize the tshirt image provided. Save images at 150DPI



9 Duplicate entries will be rejected. For example : if you submit the same design in different colours or on different colour backgrounds, one will be rejected by us. We will also reject a design if you have submitted it twice with very minor changes from one to the other.

10 COLOURS : Only 7 unique colours may be used. Whilst we give the opportunity to use 7 colours, most often we find that 3-5 colour designs look best. balancing 7 different colours can be quite a task. Please do not submit photos or full colour pictures as designs.

When designing and using colours please be aware of the following :

When designing on a dark base t-shirt colour like brown, black, red etc - a white base needs to be applied under these colours. This counts as one of the 7 allowed colours. Please be aware of this as your design could be rejected if it submitted in 7 colours on a dark t-shirt colour and does not have white as one of it's visible colours.

GOOD LUCK!